



# Recruitment Pack



## Thank you for your interest in working for The Clatterbridge Cancer Centre NHS Foundation Trust.

The Clatterbridge Cancer Centre is one of three specialist cancer centres in England. With 1,800 specialist staff and three sites, we are one of the largest NHS providers of non-surgical cancer treatment. The Trust has a unique multi-site care model serving the 2.4 million population across Cheshire and Merseyside and is consistently rated by patients as one of the best performing hospitals. Our vision is to not only maintain this level of commitment to excellence but to work with our academic and healthcare partners across the region to ensure care, treatment and patient outcomes continuously improve in the future. We are very proud of all our expert and loyal staff and we welcome people who share the collective aim of delivering excellence in everything that we do.

We opened Clatterbridge Cancer Centre - Liverpool (CCC - Liverpool) in June 2020, enabling us to work more closely with clinical colleagues in the neighbouring acute hospital, to support our sickest patients. This state-of-the-art flagship cancer hospital, along with our sites in Wirral and Aintree means we are able to provide care closer to home for cancer patients across Cheshire and Merseyside. The new hospital is based in the heart of Liverpool's Knowledge Quarter enabling us to expand our cancer research programme alongside our academic partner, the University of Liverpool.

This role is essential to the successful delivery and expansion of The Clatterbridge Cancer Centre and will provide a unique opportunity for you to join our amazing team to help shape the future of cancer services across Cheshire and Merseyside, ensuring we provide the best care for not only current patients, but for patients of the future.



**Liz Bishop**  
Chief Executive

*Liz*

The Clatterbridge Cancer Centre NHS Foundation Trust is one of the UK's leading cancer centres providing highly specialist cancer care to a population of 2.4m people across Cheshire, Merseyside and the surrounding areas including the Isle of Man.



We are a tertiary cancer centre, providing non-surgical cancer care. Our reputation and specialist services attract national and international cancer patients.

We have a unique multi-site care model consisting of three main sites, four additional systemic anti-cancer therapy (SACT) sites and 14 outpatient centres (listed below), making us one of the largest NHS providers of non-surgical cancer treatment for solid tumours and blood cancers. Our clinical model also includes the

provision of chemotherapy in the home and workplace.

Together, this enables us to provide a comprehensive range of inpatient care, acute oncology, radiology, advanced radiotherapy, chemotherapy and other systemic anti-cancer therapies (SACT), including gene therapies and immunotherapies. We are also the only facility in the UK providing low-energy proton beam therapy to treat rare eye cancers and we host the region's Teenage and Young Adult Unit.

### Cheshire and Merseyside

### We deliver cancer care across a unique multi-site network



#### Clatterbridge Cancer Centres

- CCC - Aintree
- CCC - Liverpool\*
- CCC - Wirral\*

#### Outpatient Services

1. Arrowe Park Hospital
2. Aintree University Hospital\*
3. Broadgreen Hospital
4. Clatterbridge Hospital
5. Countess of Chester Hospital
6. Halton General Hospital\*
7. Nobles Hospital
8. Liverpool Heart & Chest Hospital
9. Liverpool Women's Hospital
10. Ormskirk Hospital\*\*

11. St Helens Hospital\*
12. The Walton Centre
13. Warrington Hospital
14. Whiston Hospital

\*Includes systemic anti-cancer therapy (SACT) and outpatient clinics

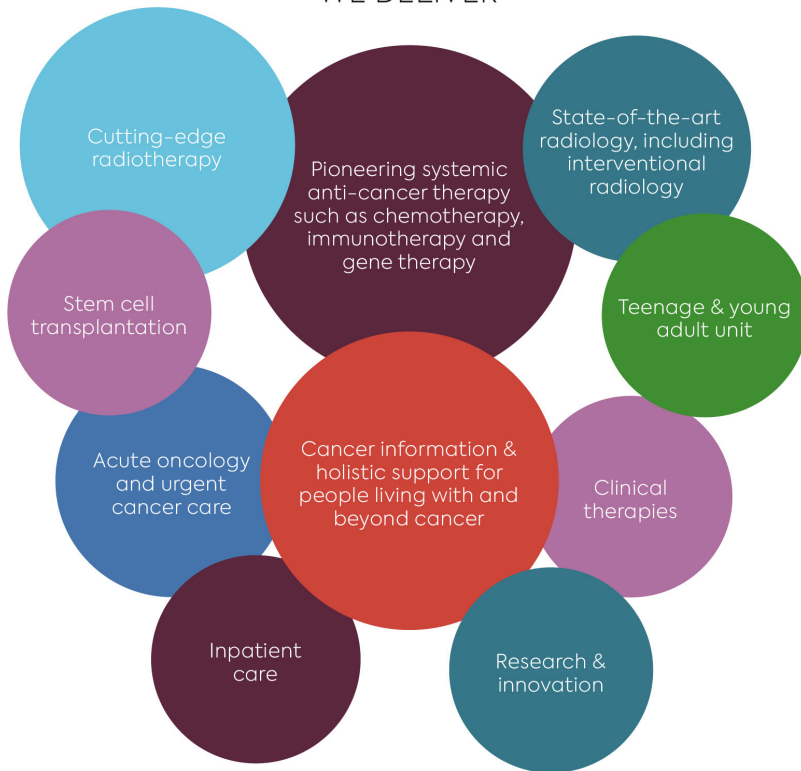
\*\*Systemic anti-cancer therapy (SACT) clinic only

#### SACT clinics

- CCC - Liverpool
- CCC - Wirral
- Marina Dalglish Centre at Aintree University Hospital
- CanTreat Unit at Halton Hospital
- Ormskirk Hospital
- Lilac Centre at St Helens Hospital



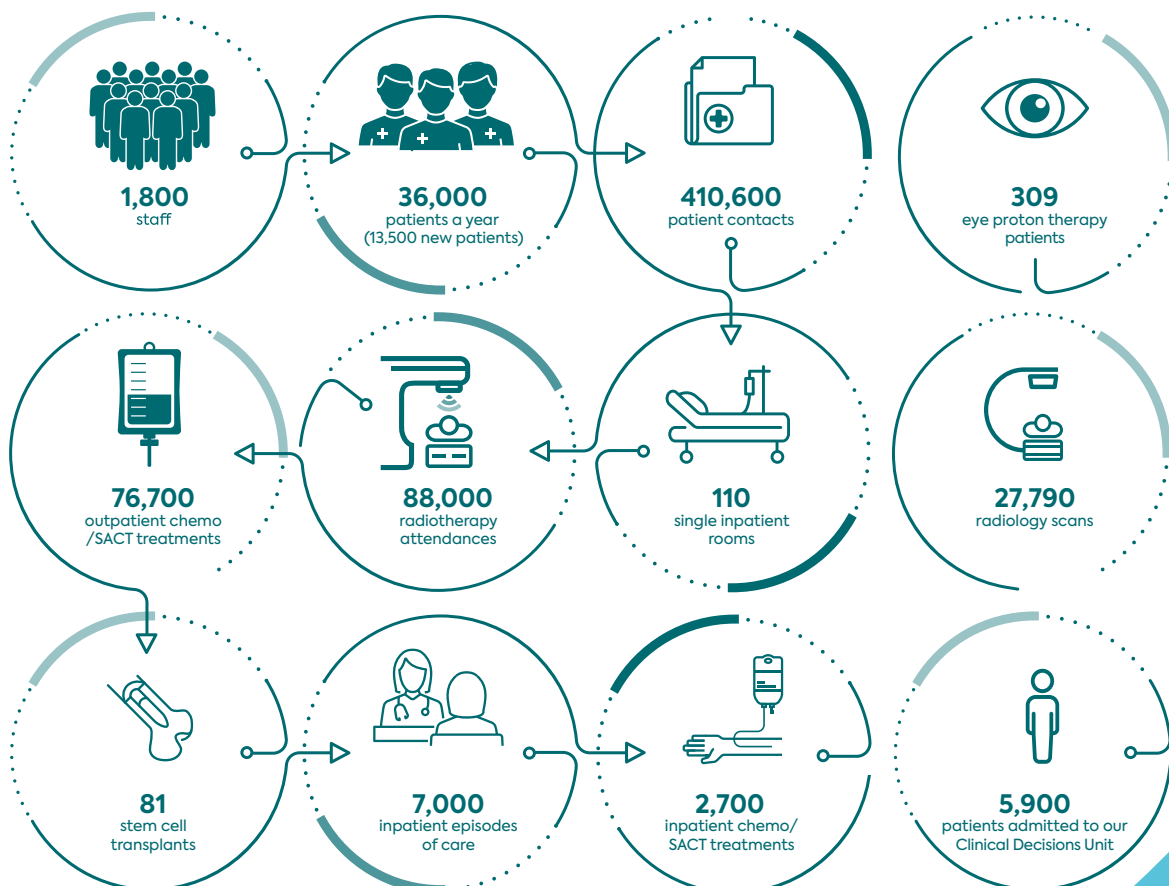
## WE DELIVER



We are committed to taking our organisation forward so that we continue to stand as a benchmark of what a modern cancer care provider should be.



## Figures 2022/23



# Providing outstanding cancer care

The new 11-floor flagship Clatterbridge Cancer Centre – Liverpool, which opened in June 2020, has transformed the way we work and will help us deliver exceptional cancer care for generations to come.

Its location on an acute site with rapid access to critical care and other medical/surgical specialties in the Royal Liverpool University Hospital next door means that we can now offer more complex treatments and clinical trials that would not previously have been possible.

The most complex and seriously unwell people with cancer can now be admitted and cared for in a specialist cancer hospital, benefiting from all the expertise and wraparound care we provide, rather than an acute trust. Our Clinical Decisions Unit sees those who need urgent assessment and cancer care (e.g. if they suddenly become unwell with side-effects), reducing the need for them to visit emergency departments.

Blood cancer and solid tumour cancer care in Liverpool are now provided in the same hospital following the transfer of Liverpool University Hospital's haemato-oncology service to us. We are bringing highly-advanced new treatments such as CAR-T to the region, saving patients from having to travel to other parts of the UK.

Patients also have access to pioneering first-in-human clinical trials, including personalised cancer vaccines. We are at the heart of a thriving research and healthcare campus with the University of Liverpool, NHS and other key research partners, enabling more cancer research and clinical trials.

Our ambition to provide outstanding cancer care now and in the future includes ensuring we have the right people with the right skills and that they are supported by the right technology, equipment and facilities. It's also about working with other healthcare providers to ensure patients are diagnosed and begin treatment as soon and as smoothly as possible.

Our clinical model – with our cancer centres in Aintree, Liverpool and Wirral, our SACT and outpatient clinics in hospitals across Cheshire and Merseyside and our treatment at home service – provides patients with enhanced access to specialist cancer care, clinical trials and supportive services.

As we look to the future, we will continue to develop cancer services that will ensure the people of Cheshire, Merseyside and beyond benefit from care of the highest quality for decades to come.



# Building world-class research

One of the most important reasons behind opening a new hospital in Liverpool was the opportunity it has given us to expand our research capacity and capability to improve outcomes for people with cancer. Research is an integral theme and key driver in our activity.

We have the infrastructure in place to support investigator-led studies and hosted studies to expand novel cancer research.

We have strengthened the focus on research and reformed the management within the Research & Innovation Directorate to transform our research performance and awareness.

As a direct result, there has been a surge in trial recruitment in recent years – we have been the top recruiter for a number of trials – and we have also significantly increased the number of clinician-led studies that we sponsor.

In partnership with the University of Liverpool, we have secured Experimental Cancer Medicine Centre (ECMC) status, which has enhanced our early-phase trial availability and recruitment. We have also secured Clinical Research Facility status in collaboration with Liverpool University Hospitals NHS Foundation Trust and Liverpool Heart and Chest Hospital to address the needs of the local population. We have also played a major role in planning and facilitating the launch of the unique Liverpool Health Partner SPARK collaborative which aims to provide a single point of access for delivering high-quality research governance, costing, contracting and on-boarding of clinical trials and research projects

within the region, thereby simplifying contract negotiations and minimising set-up times.

Our new cancer hospital in Liverpool is enabling us to support a full range of clinical trials, including first-in-human, early phase, gene therapy, as well as larger drug trials and therapies. It also includes a new research laboratory which hosts the CCC Biobank and trials processing, enabling translational research. The unique location in the Knowledge Quarter and adjacent to the University of Liverpool campus enables key academic collaboration, both with the University and the neighbouring Liverpool University Hospitals.

We recognise the importance of innovation, not only for our organisation, but the NHS and the UK as a whole. Innovation translates the knowledge and understanding gained from research into a real-world practical application. It is research that then in turn tests and validates the safety and efficacy of the innovation. The establishment of the Innovation Fund in collaboration with the Clatterbridge Cancer Charity and creation of the Innovation Team underlines our commitment to being at the leading edge of healthcare to accelerate and maximise access to innovations which improve patient outcomes and experience.

## WE LEAD RESEARCH INTO NEW CANCER TREATMENTS

Associate partner with

**NIHR** | Biomedical Research Centre at The Royal Marsden and the ICR

Collaborator in

**NIHR** | Liverpool Clinical Research Facility

NHS partner in the Liverpool Experimental Cancer Medicine Centre

**ecmc**  
Liverpool





# Leading the way

We host the Cheshire and Merseyside Cancer Alliance, one of the 19 Cancer Alliances in England tasked with delivering the Long Term Plan for cancer. Together with partners and NHS Cheshire & Merseyside we are well positioned to provide leadership and assurance in the delivery of

## Cheshire and Merseyside Cancer Alliance

the national cancer strategy whilst pioneering new models of care. Dr Liz Bishop, CCC's Chief Executive, is the Senior Responsible Officer and Chair of the Alliance Board. Its Medical Director and Deputy Senior Responsible Director is Dr Chris Warburton, from Liverpool University Hospitals.

# Connecting for the future through digital

We are a digitally mature organisation and we are proud to be part of NHS England's Global Digital Exemplar (GDE) programme. GDE investment of £5m, match funded, has enabled us to transform cancer care and support new ways of using digital technology, driving radical improvements to support agile clinicians and digital patients empowered through innovation. The GDE programme encompasses a wide range of enhancements, including closed loop prescribing, development of our cancer pathways and their interoperability with local acute and specialist providers, and our journey to becoming a true paperless hospital, transforming care using data analytics.



# Our partners



**Clatterbridge**  
Cancer Charity

Our charity helps us invest in leading technology, fund life-saving research, enhance the patient environment and enable innovations in care



**PropCare**

Our wholly-owned estates subsidiary, PropCare, provides expertise in estates, facilities and project management



Our joint venture with The Mater Private. Funds from our private clinic are reinvested back into the Trust, benefiting NHS patient care



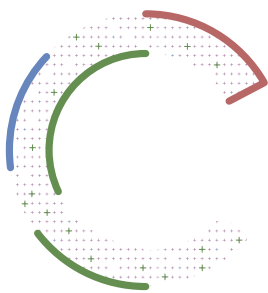
Our wholly-owned pharmacy subsidiary, PharmaC, provides specialist cancer dispensing services

# Our mission

To drive improved outcomes and experience through our unique network of specialist cancer care across Cheshire and Merseyside.

## Our strategic priorities

To deliver our mission, we have developed a five-year plan to address six strategic priorities:



### BE OUTSTANDING

Deliver safe, high quality care and outstanding operational and financial performance



### BE COLLABORATIVE

Drive better outcomes for cancer patients, working with our partners across our unique network of care



### BE RESEARCH LEADERS

Be leaders in cancer research to improve outcomes for patients, now and in the future



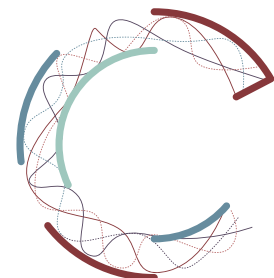
### BE A GREAT PLACE TO WORK

Attract, develop and retain a highly skilled, motivated and inclusive workforce to deliver the best care



### BE DIGITAL

Drive digitally transformed services, empowering patients and staff

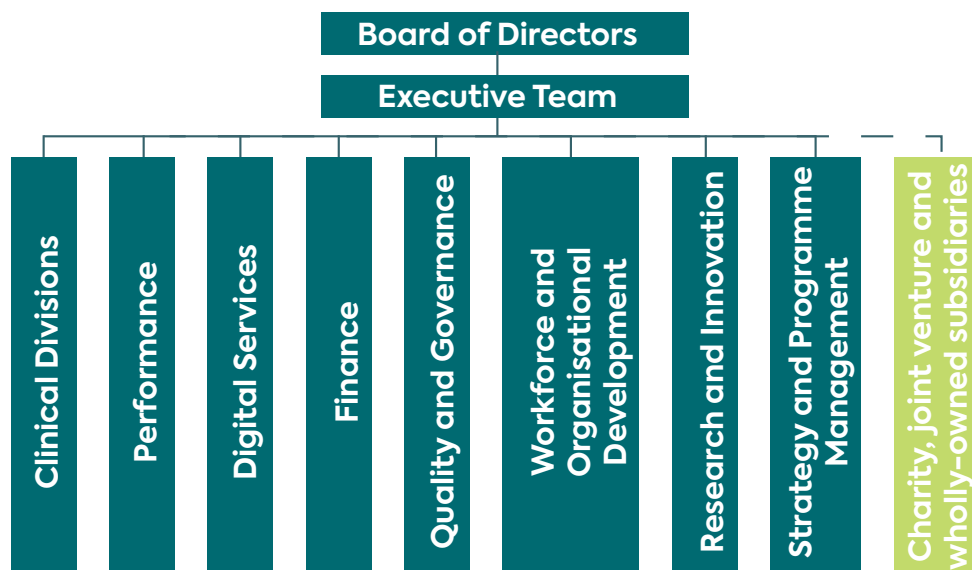


### BE INNOVATIVE

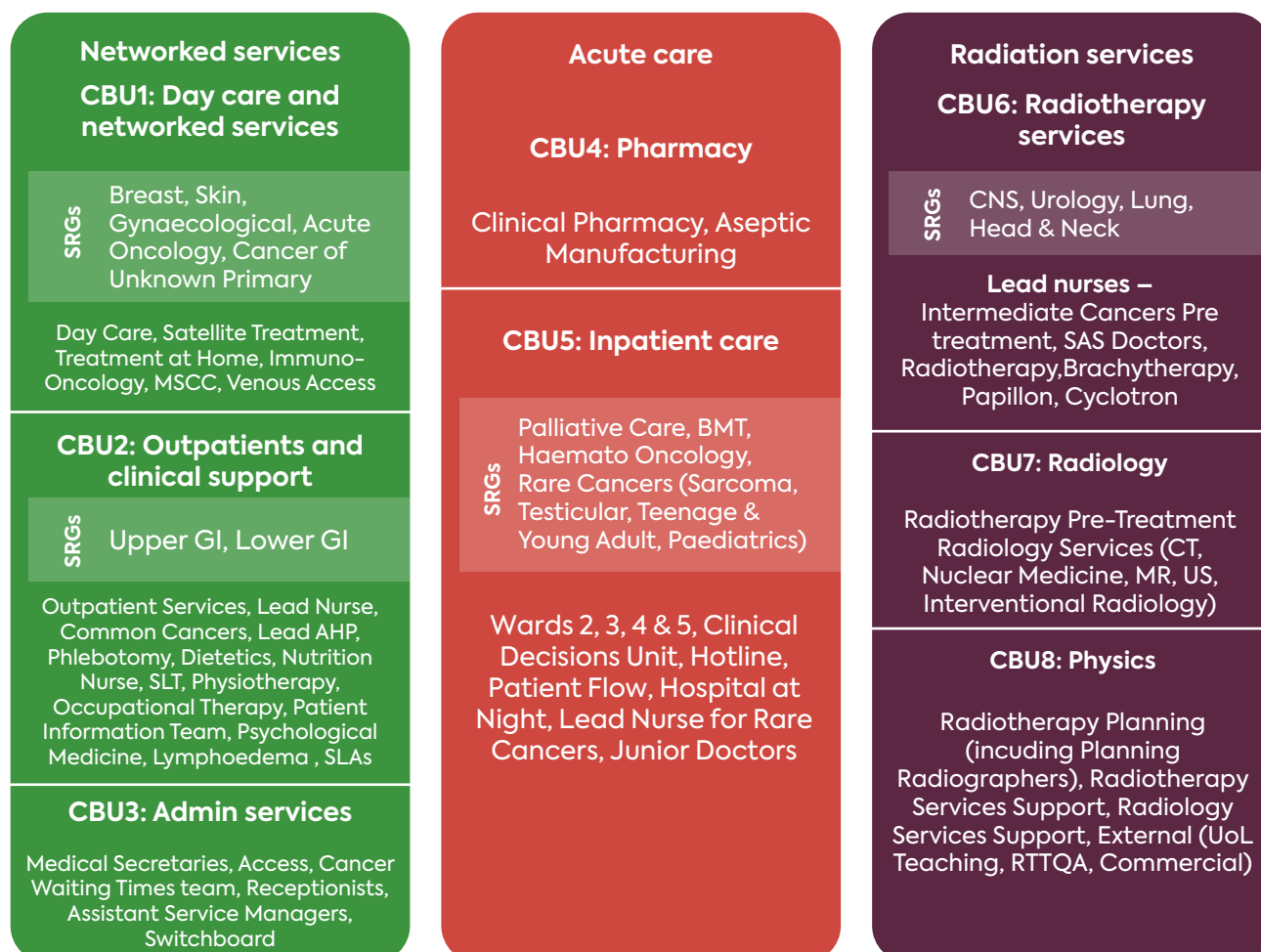
Be enterprising and innovative, exploring opportunities that improve or support patient care



# The structure of our organisation



Our operational model has three clinical divisions:



# A great place to work

## Staff benefits

We want our workforce to be at their very best, so maintaining a healthy workplace and offering health and wellbeing support is important to us. Our staff can take advantage of a range of staff benefits including:

- Flexible working and family friendly policies
- Access to the NHS pension scheme with a generous employer contribution
- Monthly staff awards
- Education and development opportunities
- Employee Assistance Provision (EAP)
- Discounted gym membership
- Cycle to work scheme
- Travel and leisure scheme
- Staff loans
- Home electronics scheme
- Lease car scheme

## Our values

Our values represent who we are and what we believe in. They define how we act to deliver the best possible care for our patients and shape The Clatterbridge Cancer Centre as a great place to work.

WE ARE ...  
KIND  
EMPOWERED  
RESPONSIBLE  
INCLUSIVE



## Equality, diversity and inclusion

The Clatterbridge Cancer Centre NHS Foundation Trust has a commitment to support an inclusive working environment which promotes equality, values diversity and respects the dignity of every individual.

We welcome applications from groups currently under-represented in our workforce, ensuring that our people are truly representative of the communities we serve. All individuals regardless of age, disability, gender reassignment, marriage or civil partnership, pregnancy or maternity, race, religion or belief, sex or sexual orientation, are encouraged to apply for our job roles. In addition, we offer a range of family-friendly, inclusive employment policies and services to support staff from different backgrounds.

We are recognised as a Disability Confident Employer and are committed to the recruitment and continued employment of people with disabilities. Where vacancies arise, candidates with disabilities who meet the minimum essential criteria for the role will be invited for interview and considered on their abilities in relation to the requirements of the job. Reasonable adjustments can be made where required throughout the recruitment and selection process. Adjustments to the work environment, equipment or working practices will be supported to enable a person with a disability to carry out the duties of the role.



## A great place to live

Boasting a worldwide reputation for football, music and the friendliness of its people, Liverpool is a vibrant and cosmopolitan city with a bright, positive outlook and a welcome that means you'll quickly feel right at home.

The city is in the midst of exciting economic, cultural and social regeneration and our new hospital is at the heart of the emerging Knowledge Quarter. Liverpool's waterfront is home to the iconic Three Graces, Albert Dock and Pier Head as well as a dazzling array of arts venues, restaurants, watersports and other forms of entertainment.

The architecture is world-class, with more listed buildings than any city outside London, and two cathedrals which are major attractions in their own right – the Anglican Cathedral and the Metropolitan Cathedral. Tate Liverpool offers displays of international and contemporary modern art, while the city has eight national museums. Theatre-lovers are also spoilt for choice with venues including the world-famous Everyman & Playhouse in the city centre and the new Shakespeare North Playhouse just a short hop away in Knowsley.

The city is well-served by air (Liverpool John Lennon Airport and Manchester Airport) offering both budget and long-haul flights, rail, coach, ferry and excellent motorway links. Some of the UK's most stunning landscapes are on your doorstep with easy access to national parks, the Peak District, the Lake

District, Snowdonia and the coasts of Lancashire and North Wales.

There are excellent schools, including a variety of denominational schools in the private and state sector. Excellent housing in pleasant suburbs near the sea and in rural areas is available, the cost of which is usually less than the national average.

From the wide, flowing Mersey to the countryside and beaches beyond the suburbs, Liverpool sits at the centre of a vast area of beauty, culture and entertainment.

The Wirral peninsula is a beautiful place – bounded by the River Mersey, the River Dee and the Irish Sea. In the shadow of the Welsh mountains, it's an area of outstanding natural beauty with lots of opportunities for enjoying spectacular sunsets, coastal walks, country parks and every kind of sport from cycling and golf to sailing and windsurfing.

The area has picturesque villages, seaside resorts, urban developments and smart towns (including the Victorian splendour of Southport), and the historic cities of Chester, Liverpool and nearby Manchester will provide all kinds of culture, heritage, sport and entertainment.

There are so many things to do in Liverpool. For more information about things to do and places to see, visit [www.visitliverpool.com](http://www.visitliverpool.com)



**Thank you for reading this document. We hope  
you have found it useful. You can find out more  
about us on our website and social media.**

**[www.clatterbridgecc.nhs.uk](http://www.clatterbridgecc.nhs.uk)**



**/CCCNHS**



**@cccnhs**



**@cccnhs**



**The Clatterbridge Cancer Centre NHS Foundation Trust**

